



Classes

2WD Stock Junior
 2WD Stock
 2WD Mod
 4WD Stock
 4WD Mod
 2WD Stadium Truck
 Short Course Truck

Event Details

29-31 August 2025

Canberra Off Road Model Car Club
 (CORMCC) WWW.CORMC.ORG

Kyeema St, Narrabundah, ACT

Entries Close 25 August

Naming rights event sponsor



Event Major Sponsors

Without the generous support of the sponsors below, this event would not be possible.

Please support the businesses that support us and allow our club to run events like the State Titles. Please consider them when making your next purchase.



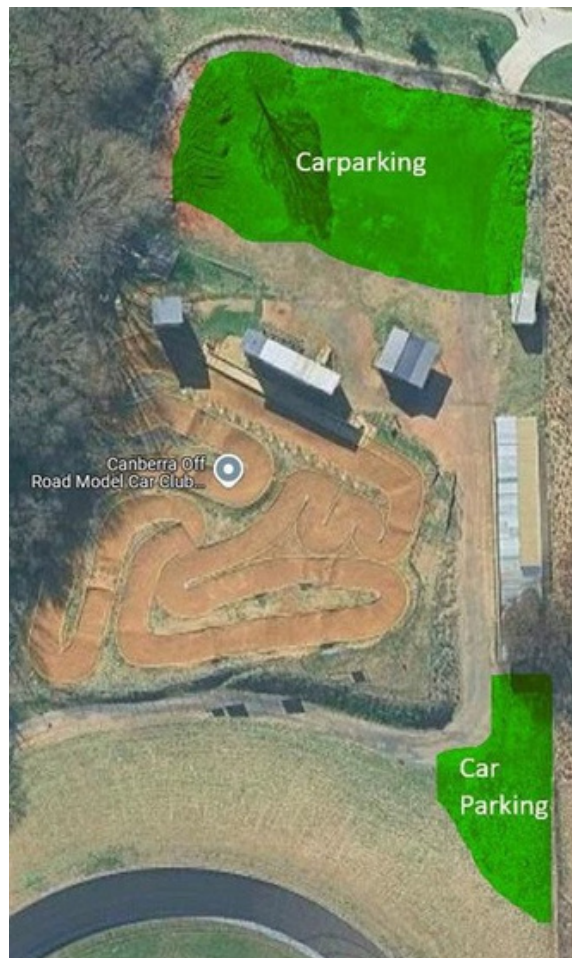
Location

Canberra OffRoad Model Car Club (CORMCC) is located at Kyeema St, Narrabundah, ACT. The track entrance is via the big red gates at the end of Kyeema St and is behind the Narrabundah cycling velodrome track.

[Google Map CORMCC Track](#)

Parking

Limited parking is available at the track. Overflow Parking is available on Kyeema St and is a short walk to the track. No parking will be allowed within the designated pit areas.



Competitors may choose to drop off their equipment then park their car at the overflow parking on Kyeema St.

Key Dates, Entries and Fees

Key Dates

Entries Open – Wednesday 18 June 2025

Entries Close – Monday 25 August – Entries Close at midnight (or sooner if class filled)

Track Closed - Monday 25 to Thursday 28 August

Friday 29 August – Sign-in, Practice and Pre-Scrutineering

Timing from **9am to 5pm**. This will be a controlled practice per class.

Saturday 30 August – 2WD Stock (Junior), 2WD Stock, 2WD Modified & 2WD Stadium Truck

Drivers briefing to commence at **7:30am**, the day is expected finish by 5pm.

Sunday 31 August – 4WD Stock, 4WD Modified, 2WD Short Course Truck

Drivers briefing to commence at **7:30am**, the day is expected to finish by 5pm.

Entries

Entries must be submitted via the online Race Registration form available on the CORMCC website at [Canberra Off Road Model Car Club | Cormcc | Australia](#).

No paper form is available. Entries will be capped per class with remaining spots available displayed on the entry form.

Payment can be made via

Square online Eftpos payment link. Supplied after completion of the online entry form. Card payment (incurs 2.3% Card fee),

Or via Direct Deposit to the details below:

Canberra OffRoadModelCar Club

BSB: 112-908

A/C: 490926761

Ref: 'Your Name' and Class

Note: Race entries are pending until payment received. Payment must be completed by Friday 22 August 2025. Payments made after the closing date will incur the late entry fee.

Cross Entering

Crossenteringissubject to RCRA Rule 2.7.4

- No cross-entering between buggy motor classes. A competitor may enter in any Stock Classes or in any Modified Classes but not both (see RCRA rule 2.7.4a)
- Cross entering Stadium Truck or Short Course Truck classes **IS** allowed.
- No cross-entering between 2WD Junior Stock and 2WD Stock, cross-entry between 2WD Junior Stock and 4WD Stock is allowed.

Registration Fees

First Class	\$40
Additional Classes (each)	\$30
Junior 2WD Buggy	\$20
Late Fee	\$30

Refunds

Where an entrant withdraws from the event **before** 25 August 2025, they will be entitled to a full refund.

Entrants who withdraw from the event **after 25 August 2025** or who do not show up, will **not** be entitled to a refund. The host club **may** use their discretion to consider special circumstances for refund (See RCRA rule 2.8.15).

NB: Competitors who have not entered by the entry close date **will not** be graded and will be placed in the last heat in their class subject to availability. **No exceptions.**

Race Format and Scrutineering

Qualifying

- 4 rounds of qualifying for all classes **(Schedule Permitting)**
- 1 warm-up lap then 5 minutes per round + final laps
- Drivers reseeded after Q2 based on results (i.e., top drivers grouped together)
- Maximum 10 drivers per qualifying heat
- IFMAR staggered start
- 1 number sticker per car (front window)

Finals

- 3 Finals for all classes **(Schedule Permitting)**
- 1 Warm-up lap then 5 minutes per final round + final laps
- Maximum 10 Driver "A" Mains
- Higher number of drivers possible for lower finals
- 1 Number sticker per car (Placed on windscreen)

Car Numbers

- All cars to be fitted with one number sticker on the front screen during all qualifying, racing and controlled practice.
- Driver's responsibility to ensure correct numbers are fitted so they can be scrutineered correctly after their race.

Marshalling

- Drivers must be available for marshalling the race following theirs.
- A table will be supplied for cars and transmitters to be placed after each race so Marshalls can promptly move into position.
- Failure to do so could result in a DQ, at the race director's discretion
- It is the driver's responsibility to find a backfill Marshall if required.
If drivers have an injury or disability preventing them from Marshalling the entire event, please make this known to race control during the race brief.

Results

- Race sheets will be printed and posted near race control; two screens will display race information in the pits and drivers stand.
- Live Time scoring will be available & accessible via the following link: [Canberra Off](#)

[RoadModelCar Club::BroadcastandResults::LiveRC](#)

Track Maintenance

- Track maintenance will be primarily carried out when required, with urgent repairs done as needed – although repairs during race days are rarely required.
- Track will be air-blown and watered prior to and throughout each day as required.

Rain & Weather

- The schedule will be adjusted to accommodate any unfavourable weather to ensure completion of all 'A' finals for each class as a priority.

Scrutineering

- All cars to be pre-scrutineered on Friday and approved.
- All race tyres must be checked in and recorded as part of the scrutineering process
- All stock class cars must be voltage tested prior to each race; minor tolerance will be applied at the discretion of the scrutineer.
- Cars to be taken to the scrutineering zone after the race and collected after marshalling. Cars must not be touched by competitors until after they have been checked and released by the officials.

Race Procedure

- After voltage testing (stock cars only) all cars are to be placed in the pit lane in a designated car bay.
- Drivers may then make their way up the stairs and wait on a marked standing space.
- Please give way to wheelchair users and allow them to make their way to the top and wait on the flat area.
- When the previous drivers have left the stand, you may make your way forward on the stand and choose your driving position.

- Driving positions on the stand shall be open for Rounds 1 and 2, then per qualifying results after that.
- After your race is completed. Immediately make your way down the stairs to the scrutineering tent, placing your radio (still powered on) in the designated area, and go to your designated marshalling position.

Control Tyres

This event is using a controlled **TYRE** for sanctioned classes. All driven wheels must use the controlled tyre and an unmodified open cell foam insert as per RCRA rules 9.1.

BUGGY

- Rear
 - Raw Speed SuperMini 1/10 Buggy Rear Tire - Soft with Grey Open Cell Insert - SKU RS100309SG
- 4WD Front
 - Raw Speed SuperMini 1/10 4wd Buggy Front Tire - Soft with Grey Open Cell Insert - SKU RS100209SG
- 2WD Front
 - Non controlled optional front tire for 2wd classes. (Rawspeed SKU RS100109SG)

STADIUM TRUCK

- Rear
 - Raw Speed SuperMini 1/10 Stadium Truck Tire - Soft with Black Insert - RS100409SB

* As different cars and wheels have varying offsets affecting car width, it is the driver's responsibility that when using pre-glued tyres/wheels they are legal as per the [RCRA specifications](#). It is recommended drivers glue their own tyres on known wheels.

SHORT COURSE TRUCK

- Rear
 - Raw Speed SuperMini 1/10 Short Course Tire - Soft with Black Insert - RS100509SB

PURCHASING TIRES

CORMCC will NOT be supplying tires for the event. Tires can be purchased for the event the naming rights sponsor [Campbelltown](#) Hobbies

Tyre Limits (Maximum)*

2WD Stock and Junior Buggy – 3 sets for rear (*no front control tyre*)

4WD Stock – 3 full sets

2WD Modified – 4 sets for rear (*no front control tyre*)

4WD Modified – 4 full sets

Stadium Truck – 4 sets for rear (*no front control tyre*) – *see note below.*

Short Course Truck – 3 sets for rear (*no front control tyre*) – *see note below*

NOTE FOR STADIUM TRUCK AND SCT: As different cars and wheels have varying offsets! affecting car width, it is the driver's responsibility that when using pre-glued. tyres/wheels they are legal as per the RCRA specifications. It is a recommendation; drivers glue their own tyres on known wheels.

* Practice tyres are excluded from the numbers above.

Tyre Cleaning

Only regularly available detergent-based cleaners and water can be used to clean tyres. (e.g. Simple Green). The use of solvents to clean the tyre bead before the gluing, application is permitted. (RCRA Rule 9.6.6).

NOTE: It is advised to put a dot of glue over the compound mark to preserve it for ease of scrutineering on race day.

Punching Tyres

A maximum of two (2) holes may be punched in each tyre with a maximum hole diameter of 4mm.

Inserts

Except for Short Course Truck, **inserts MUST be the Closed Cell foam as supplied with the currently produced version of the control tyre.** No other inserts shall be allowed, modifying or gluing the insert to the rim is not allowed.

Short Course Truck must use the Closed Cell inserts as supplied with the tyre. No other inserts shall be allowed. Modifying the insert *IS* allowed.

Pre-glued tyres/wheel for Stadium truck and SCT is allowed.

Additive

Additive is not permitted under any circumstances. Any competitor suspected of using additive on any tyre including the 2wd front tyre will have a rubber sample taken from the tyre to be tested. If additive is found, they shall be disqualified after the event. Tyre Warmers are also banned.

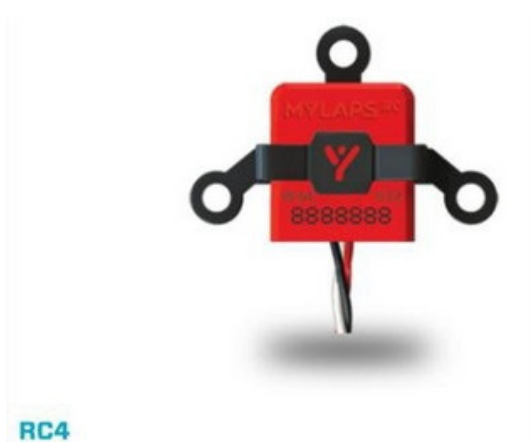
Motor and ESC Requirements

Below is a summary of the motor and ESC requirements for the event. It is strongly advised you refer to the RCRA EP Off-Road General and Technical Rules for further information to ensure your Motor and ESC meet sanctioned event requirements.

Class	Motor and ESC Requirements 17.5T Approved Brushless
2WD Junior Stock Buggy 2WD Stock Buggy	Motors & Approved ESC (blinky)
2WD Modified Buggy	Approved Brushless Motors & Approved ESC
4WD Stock Buggy	13.5T Approved Brushless Motors & Approved ESC (blinky)
4WD Modified Buggy	Approved Brushless Motors & Approved ESC
2WD Stadium Truck	Approved Brushless Motors & Approved ESC
2WD Short Course Truck	10.5T Approved Brushless Motors & Approved ESC (blinky)

Transponders

Our LiveTime system will only identify MyLaps RC4 generation transponders. AMB, AMBrc and non-MyLaps branded transponders (e.g MRT) are not supported at our track.



Rules & Regulations

This event will be run to all RCRA rulings. Refer to the RCRA website for further details: [2023 General and Technical Rules](#). To enter this event, you MUST be a current financial member of an RCRA affiliated club. International competitors are welcome to enter. International competitors must be members of organisations who are ultimately affiliated with IFMAR. Driver Aids are restricted per rule 9.2 in the General and Technical Rules. Use of restricted aids will result in disqualification.

General Rules

All competitors, mechanics, and guardians of junior competitors must read and understand the [2023 General and Technical Rules](#) on the RCRA website, as well as the [RCRA Code of Conduct](#) document. Entry into this event acknowledges your acceptance of the rules and specifications within the aforementioned documents.

- Put your safety first.
 - Your Marshall point will be your car number. Discuss any marshalling concerns with the Race Director.
 - Marshals must be present at their marshalling point at the “30 seconds” call wearing their fluorescent vest, and enclosed shoes. Failure to do so will attract a penalty at the Race Directors discretion (lose best qualifying result and issuing of an official warning per (RCRA 8.2.7.1) unless the Race Director has been consulted in advance. This is to assist adherence to the schedule, and for safety.
 - Marshals will pay attention to their corner. Marshal how you wish to be marshalled.
 - Marshals shall remain at their post until relieved by the next marshal to avoid any delays. Raise your hand if you have not been replaced by the next marshal and one shall be appointed to your post. Any marshal who leaves their post empty may be disqualified at the discretion of the Race Director.
 - Avoid all distractions to respect fellow competitors. Do not obstruct the vision of drivers.
 - Young Junior drivers (12 years and under) *should* marshal with an adult. Very experienced young Marshall’s may marshal independently at the discretion of the host club (safety permitting). Please see the race director for approvals.
 - All cars must be pre-scrutineered prior to the commencement of the event with indication markings of such remaining present throughout the event.
 - Always follow the direction of officials, particularly the Referee and Race Director.
 - Observe instructions of the Referee immediately, and without disruption.
- Clarifications may be sought afterwards.
- Corner cutting is not allowed and will attract warnings or penalties.
 - All batteries must be 2S Li-Poly Hard Case and be on the approved battery list by [BRCA](#) or [ROAR](#).
 - Batteries **MUST** be removed from the car and charged in a LiPo sack.
 - Over-charging of batteries will be penalised where in breach of the RCRA ruleset.
- Max 8.40V charged.
- Driver coaching is strictly prohibited, any communication with any driver by any team member during a race will result in that team’s driver being disqualified.

Stock Class General Rules

- Blinky or zero timing brushless ESCs must be on the approved zero timing ESC listing from [BRCA or ROAR](#).
- ESC must 'flash' or 'blink' when turned on as described in the approved list
- Motor must be on the approved [BRCA or ROAR](#) list
- Fully charged battery must be at or below 8.400V. Maximum charged temperature shall be ambient temperature +/- 5 deg C
- Any battery presented for testing above 8.400V may be allowed to discharge their battery at the discretion of the scrutineer within a small tolerance. Repeat offenders and more experienced drivers will not be tolerated.

Behaviour Rules

- CORMCC will not tolerate any form of verbal or physical abuse including via social media. Anyone who engages in this kind of behaviour will be removed from the competition.
- This competition is also subject to the RCRA Code of Conduct
- No Smoking/vaping in the pit area. A designated area is available.
- No alcohol or illicit drugs are to be consumed during the event. Anyone found doing such will be asked to leave.